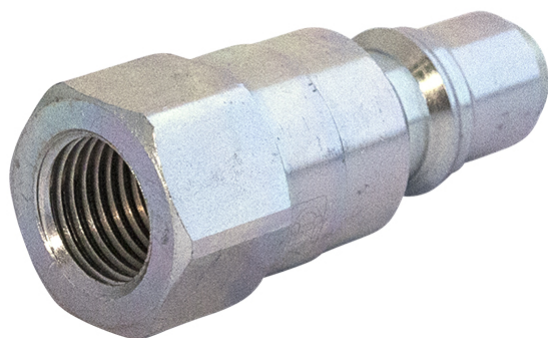


# Quick release series T



**Product group** 526  
**Connected length (mm)** 108  
**Bulkhead**  
**Locking sleeve**  
**Security lock**  
**Eliminator**  
**Valve**

	Working pressure (MPa)	Thread	Dimension (Inch)	Thread type	Weight (kg)
<b>55520204</b>	45	G 1/4" Female	1/4"	-	0.05
<b>55520206</b>	35	G 3/8" Female	3/8"	-	0.06
<b>55520208</b>	30	G 1/2" Female	1/2"	-	0.1
<b>55520212</b>	28	G 3/4" Female	3/4"	-	0.19
<b>55520216</b>	25	G 1" Female	1"	-	0.36
<b>55520224</b>	20	G 1 1/2" Female	1 1/2"	G	-
<b>55520232</b>	18	G 2" Female	2"	G	-

