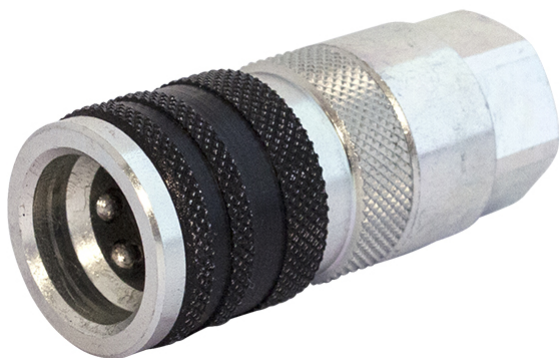


Quick release series T



Product group 526
Connected length (mm) 108
Locking sleeve
Security lock
Bulkhead
Valve
Eliminator

	Working pressure (MPa)	Thread	Dimension (Inch)	Weight (kg)
55520302	-	G 1/8" Female	1/8"	-
55520304	45	G 1/4" Female	1/4"	0.15
55520306	35	G 3/8" Female	3/8"	0.23
55520308	30	G 1/2" Female	1/2"	0.34
55520312	28	G 3/4" Female	3/4"	0.6
55520316	25	G 1" Female	1"	1.01
55520324	20	1 1/2"	1 1/2"	-
55520332	18	2"	2"	-

