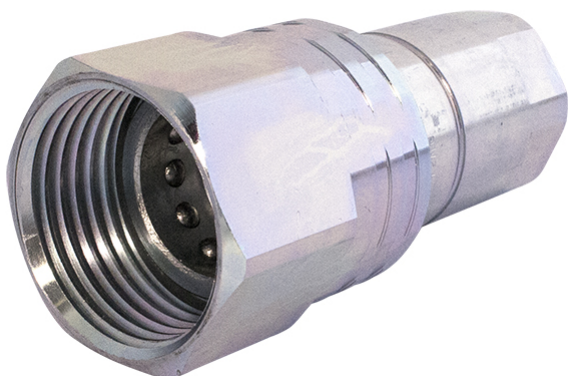


# Faster series VV



**Product group** 520  
**Connected length (mm)** 132  
**Locking sleeve**  
**Security lock**  
**Bulkhead**  
**Eliminator**  
**Valve**

|                 | Working pressure (MPa) | Thread        | Dimension (Inch) | Weight (kg) |
|-----------------|------------------------|---------------|------------------|-------------|
| <b>55582304</b> | 35                     | G 1/4" Female | 1/4"             | 0.12        |
| <b>55582306</b> | 30                     | G 3/8" Female | 3/8"             | 0.23        |
| <b>55582308</b> | 30                     | G 1/2" Female | 1/2"             | 0.31        |
| <b>55582312</b> | 25                     | G 3/4" Female | 3/4"             | 0.69        |
| <b>55582316</b> | 23                     | G 1" Female   | 1"               | 0.96        |

